

CERTIFICATE OF ANALYSIS

LL-37

Cathelicidin Antimicrobial Peptide · 5mg Lyophilised

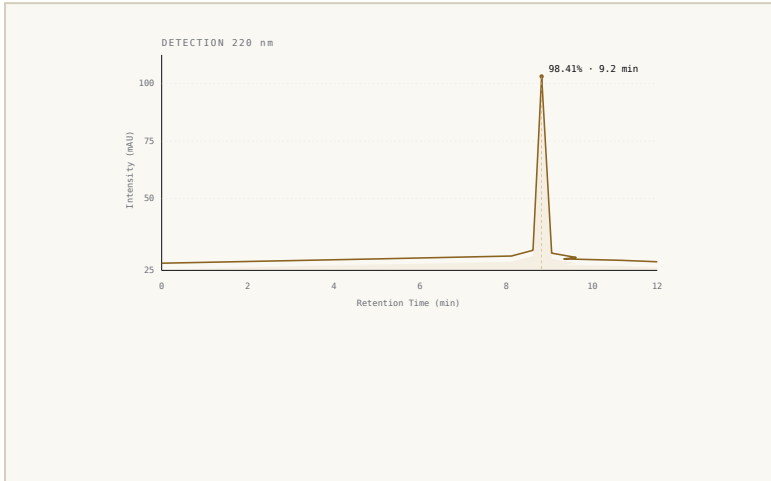
01 PRODUCT INFORMATION

PRODUCT	LL-37	CAS NUMBER	154947-66-7
CHEMICAL NAME	Cathelicidin Antimicrobial Peptide LL-37	MOL. FORMULA	C ₂₀₅ H ₃₄₀ N ₆₀ O ₅₃
QUANTITY	5mg per vial	MOL. WEIGHT	4493.33 g/mol
BATCH / LOT	LL37250506	APPEARANCE	White lyophilised powder
MFG. DATE	06 May 2026	RETEST DATE	06 May 2028
STORAGE	2–8°C, dark, dry	INTENDED USE	Research Use Only

02 ANALYTICAL RESULTS

TEST ITEM	SPECIFICATION	RESULT	METHOD
Appearance	White to off-white lyophilised powder	✓ COMPLIES	Visual
Identification	Positive	✓ COMPLIES	HPLC / MS
Peptide Sequence	Correct sequence confirmed	✓ COMPLIES	Mass Spec.
Purity	≥ 99.0%	98.41%	HPLC
Peptide Content	95.0% – 105.0%	99.2%	HPLC
Acetate Content	≤ 12.0%	8.0%	Ion Chrom.
Water Content	≤ 8.0%	2.9%	Karl Fischer
Bacterial Endotoxins	≤ 10 EU/mg	< 2 EU/mg	LAL Test
Residual Solvents	Meets USP / EP requirements	✓ COMPLIES	GC
Heavy Metals	≤ 10 ppm	< 1 ppm	ICP-MS
Sterility	Sterile	✓ COMPLIES	USP <71>
pH (Reconstituted)	4.0 – 7.0	5.5	pH Meter

03 HPLC CHROMATOGRAM SUMMARY



MAIN PEAK RT	9.2 min
PEAK AREA	98.41%
TOTAL IMPURITIES	1.59%
DETECTION	UV 220 nm
COLUMN	C18 reversed-phase

04 MASS SPECTROMETRY SUMMARY

EXPECTED MOLECULAR MASS	4493.33 Da
OBSERVED MOLECULAR MASS	4493.38 Da
MASS DEVIATION	+ 0.05 Da (within tolerance)
RESULT	✓ IDENTITY CONFIRMED

05 QUALITY ASSURANCE & AUTHORISATION

"This batch has been manufactured and tested in accordance with internal quality control procedures and complies with all specifications listed in this Certificate of Analysis."

RELEASED

QC APPROVED

APPROVED BY

Daniel Hughes

QUALITY ASSURANCE MANAGER

SIGNATURE

D. Hughes

AUTHORISED DIGITALLY

DATE OF ISSUE

06 May 2026

ISSUED DIGITALLY

06 LABORATORY INFORMATION

ANALYTICAL TESTING BY

Hongbai Technology Co.

Independent third-party laboratory · HPLC · MS · ICP-MS · LAL

ISO/IEC

17025

ACCREDITED

ISSUED BY

Nexapep Ltd

DOCUMENT TYPE

Independent Third-Party CoA

EMAIL

hello@nexapep.co.uk

TEST REPORT NO.

HB-LL37250506

WEBSITE

nexapep.co.uk

SAMPLE REFERENCE

LL37250506



DOCUMENT VERIFICATION REFERENCE

NX-LL37250506-9A70-B9E3

Scan or visit nexapep.co.uk/verify
and quote this reference to confirm authenticity.